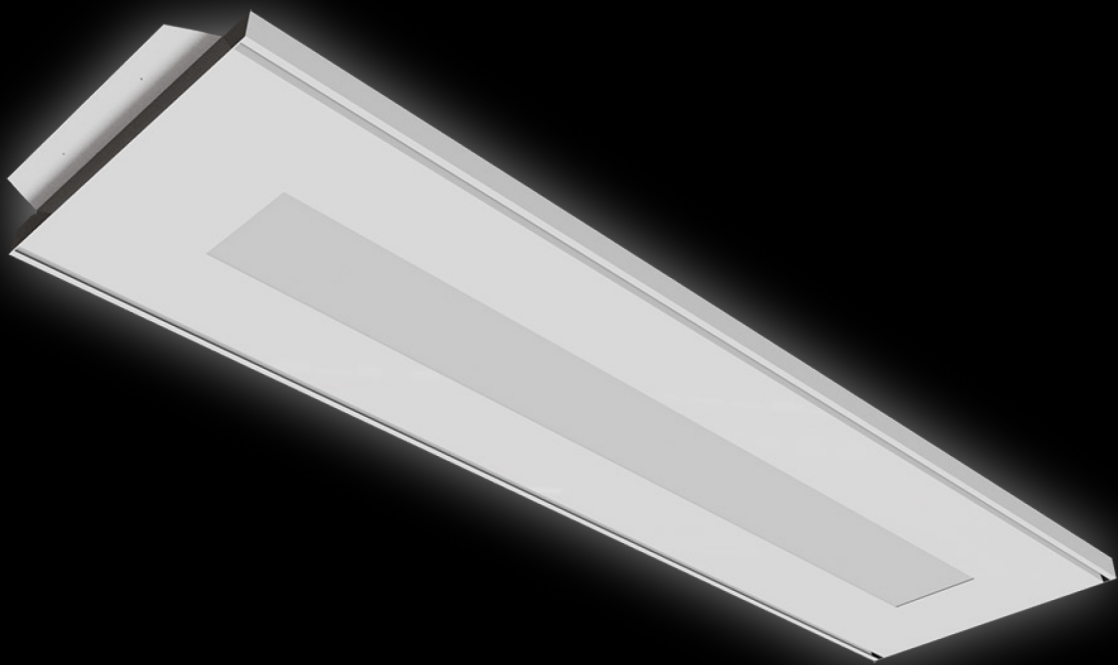


LED UK

TEGRA - SAS330 CEILINGS



ABOUT US

LED UK is an International supplier of LED lighting technology. We specialise in complete energy efficient lighting solutions for both new and retrofit applications. We provide the highest quality LED based products by integrating premium components to ensure reliability and optimum performance.

Our service delivers a full bespoke package from site surveys, lighting design, the provision of leading edge technology and installation.

TEGRA - SAS330 CEILINGS

At LED UK we provide a comprehensive range of lighting options for all your commercial applications each tailored to meet the operating and design parameters required.

Lighting design services are available to ensure designs meet BS EN 12464-1:2011, and Society of Light and Lighting: Code for Lighting 2012. We can also provide a cost of ownership analysis to illustrate savings which can be made versus conventional lighting.

From first point of contact to final sign off we aim to support our customers through the complete process so all details are fully dealt with to maximise performance. Within this brochure we have included our complete Tegra for SAS330 Ceilings Range of LED Downlights, if you are looking for a size not featured here please contact us.

To view our full range of LED products please visit www.led.uk

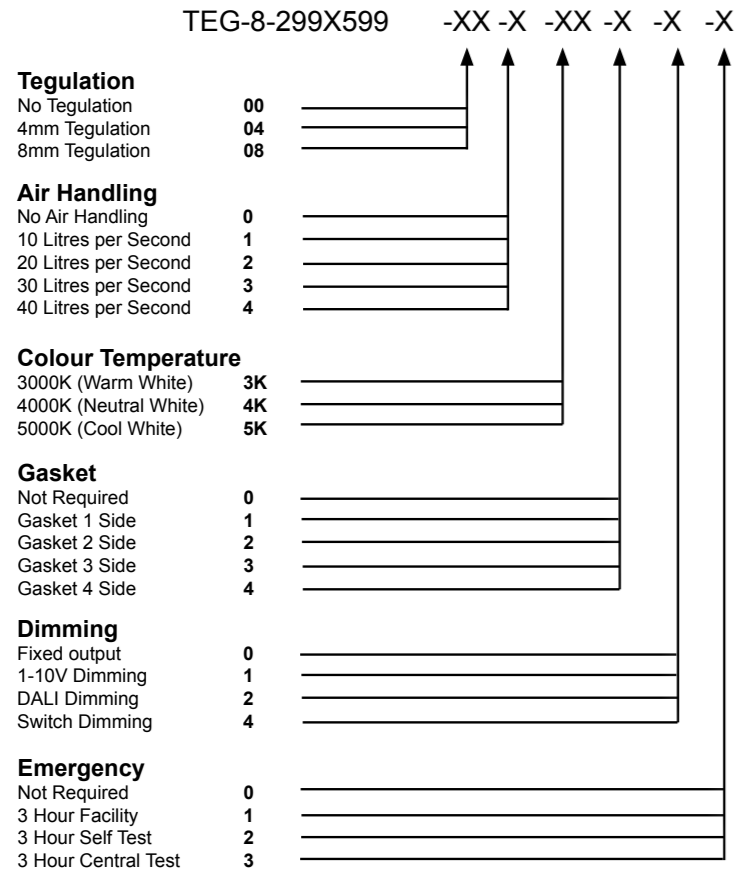
TEGRA 299X599

- Architectural appearance - screwless smooth bezel
- High transmittant satin opal lens
- Instant on - no flicker
- Environmentally Friendly - No mercury or lead enters the environment
- SAS330 Compliant
- No RF and electronic magnetic interference
- Over 50,000 hours life span



The Tegra LED panel is a bespoke modular luminaire designed to fit SAS330 ceilings. The body is made from powder coated steel giving a screwless appearance from under the ceiling. The diffuser is made from high efficiency PMMA which gives the luminaire optimum performance.

The Tegra has a lifespan of over 50,000 hours and produces an efficacy of 114 lm/W.



Example of Code:

TEG-8-299X599-00-0-3K-1-0-0

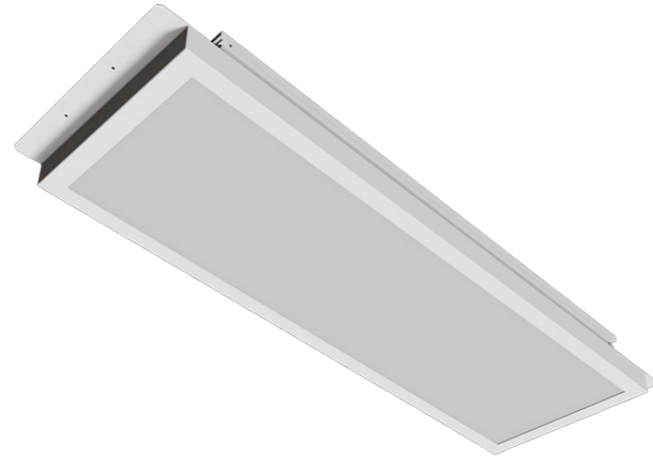
Tegulation: No Tegulation
 Air Handling: No Air Handling
 Colour Temp.: 3000K
 Gasket: Gasket 1 side
 Dimming: Fixed output
 Emergency: Not Required

Tegra 299x599	
Power	18 W
Dimensions	299 x599 x 75mm
Weight	3.7 kg
Installation	SAS330 Ceiling
Voltage	220-240Vac 50/60Hz

Performance	
Exit Lumens (lm)	2,052 lm
Efficiency	113.6 ll/cW
MacAdam Ellipse	3 SDCM
Colour Rendering	Ra>80
Colour Temperature	3000K / 4000K / 5000K
UGR	<19
Longevity	50,000 hours
Warranty	5 Years

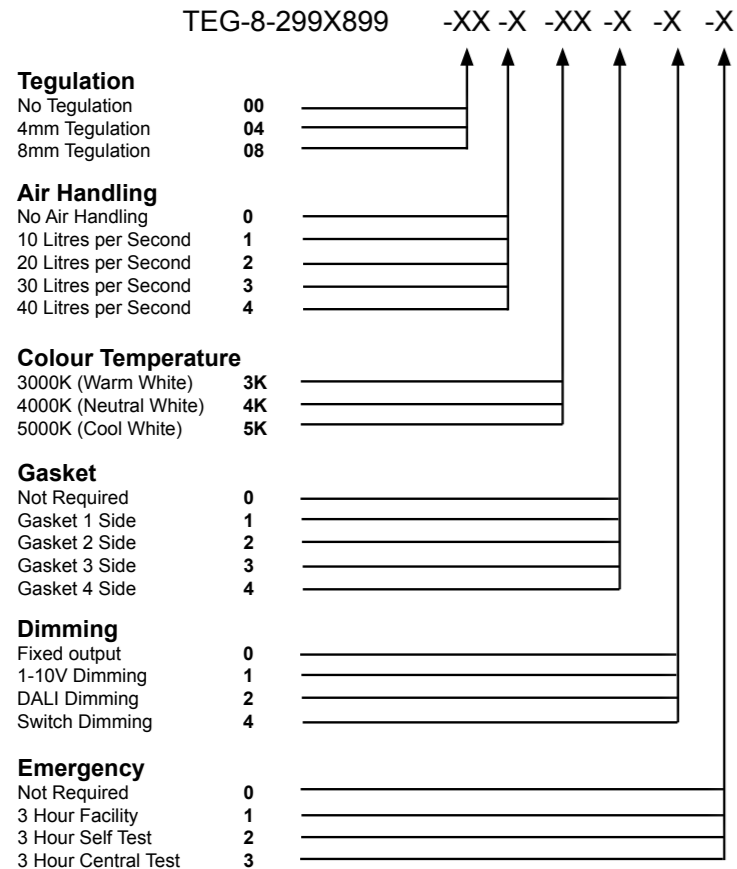
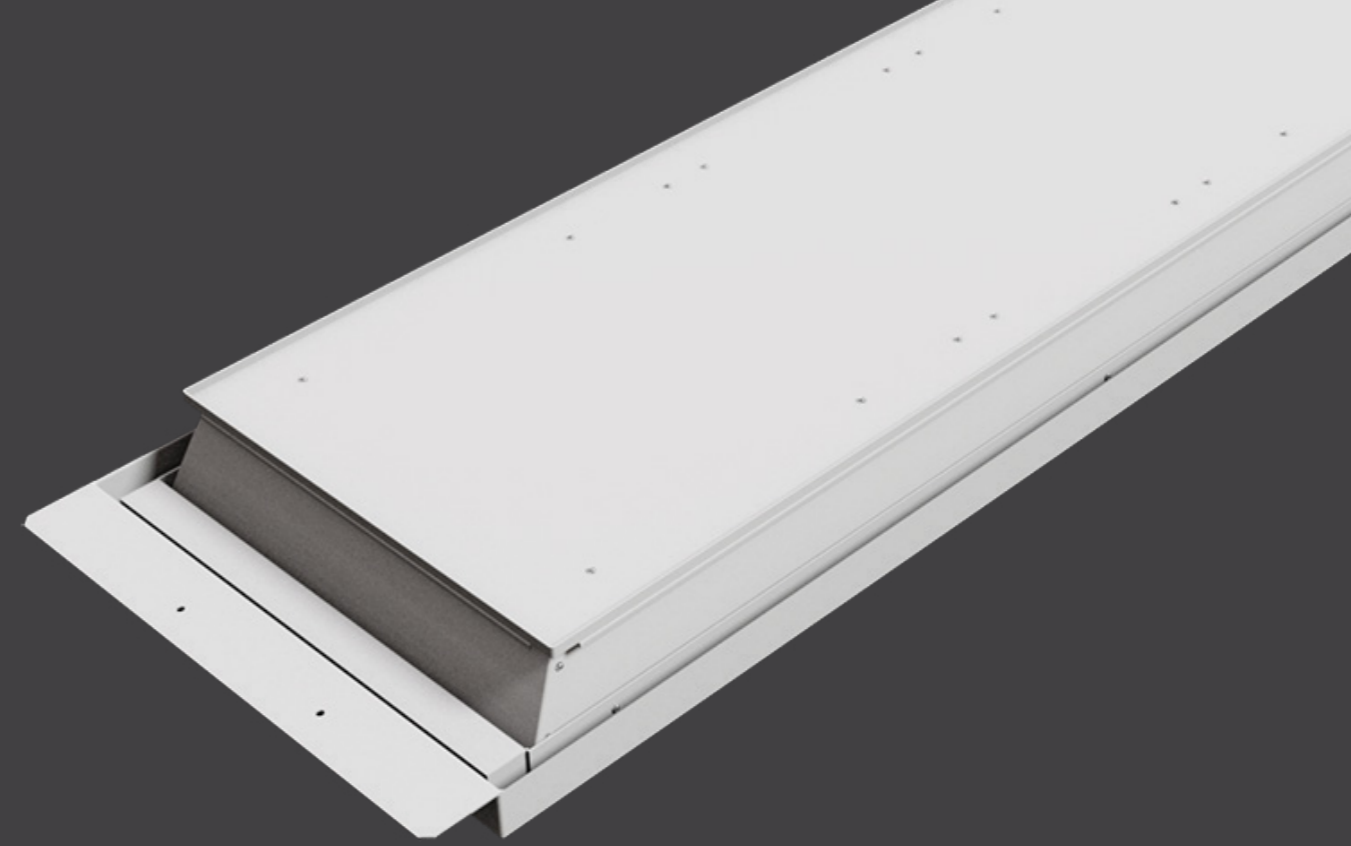
TEGRA 299X899

- Architectural appearance - screwless smooth bezel
- High transmittant satin opal lens Instant on - no flicker
- Environmentally Friendly - No mercury or lead enters the environment
- SAS330 Compliant
- No RF and electronic magnetic interference
- Over 50,000 hours life span



The Tegra LED panel is a bespoke modular luminaire designed to fit SAS330 ceilings. The body is made from powder coated steel giving a screwless appearance from under the ceiling. The diffuser is made from high efficiency PMMA which gives the luminaire optimum performance.

The Tegra has a lifespan of over 50,000 hours and produces an efficacy of 114 lm/W.



Example of Code:

TEG-8-299X899-00-0-3K-1-0-0

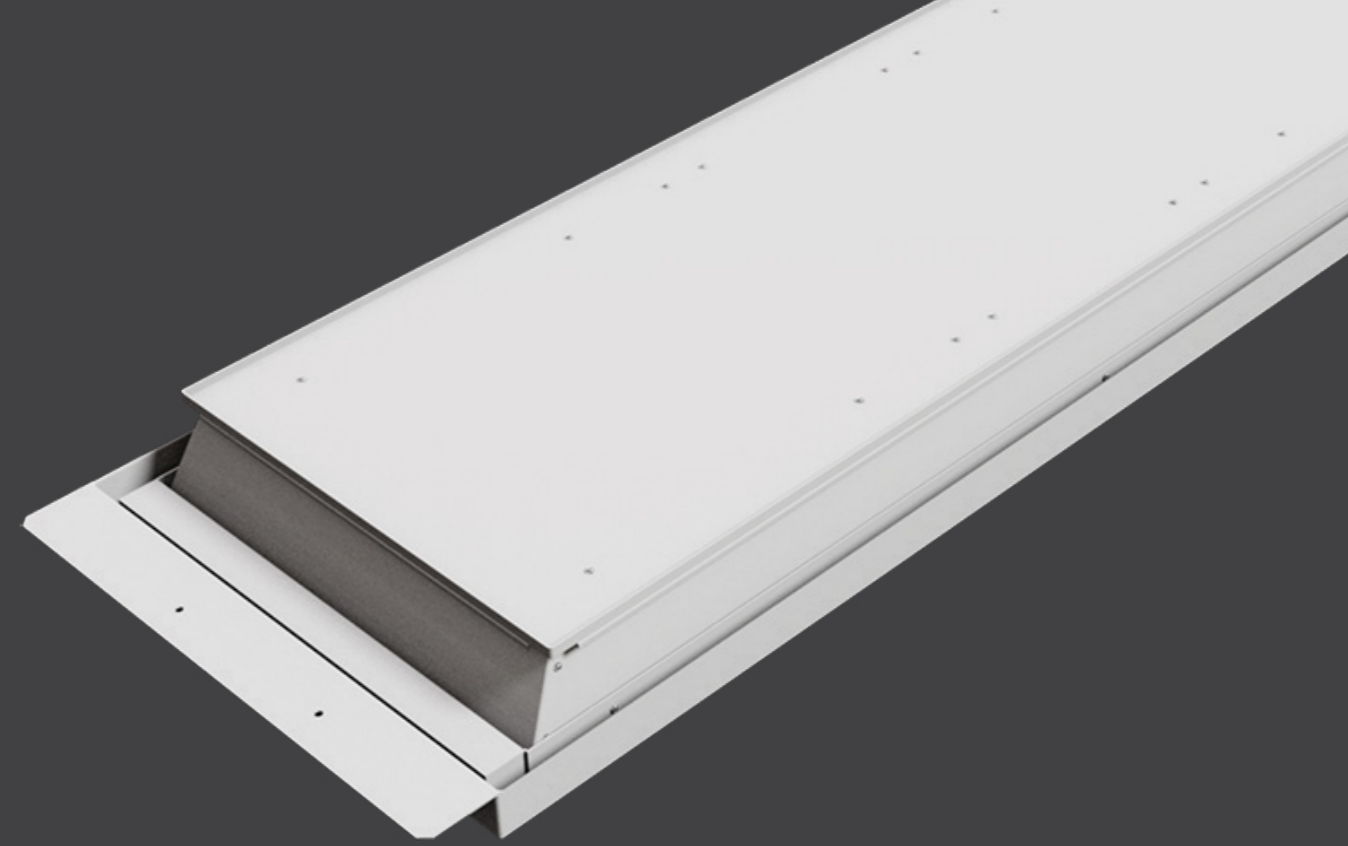
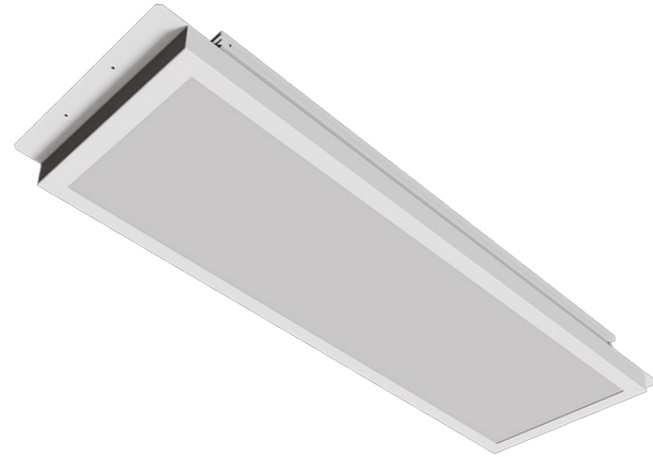
Tegulation: No Tegulation
 Air Handling: No Air Handling
 Colour Temp.: 3000K
 Gasket: Gasket 1 side
 Dimming: Fixed output
 Emergency: Not Required

Tegra 299x899	
Power	27 W
Dimensions	299 x899 x 75mm
Weight	5.6 kg
Installation	SAS330 Ceiling
Voltage	220-240Vac 50/60Hz

Performance	
Exit Lumens (lm)	3,078 lm
Efficiency	113.6 ll/cW
MacAdam Ellipse	3 SDCM
Colour Rendering	Ra>80
Colour Temperature	3000K / 4000K / 5000K
UGR	<19
Longevity	50,000 hours
Warranty	5 Years

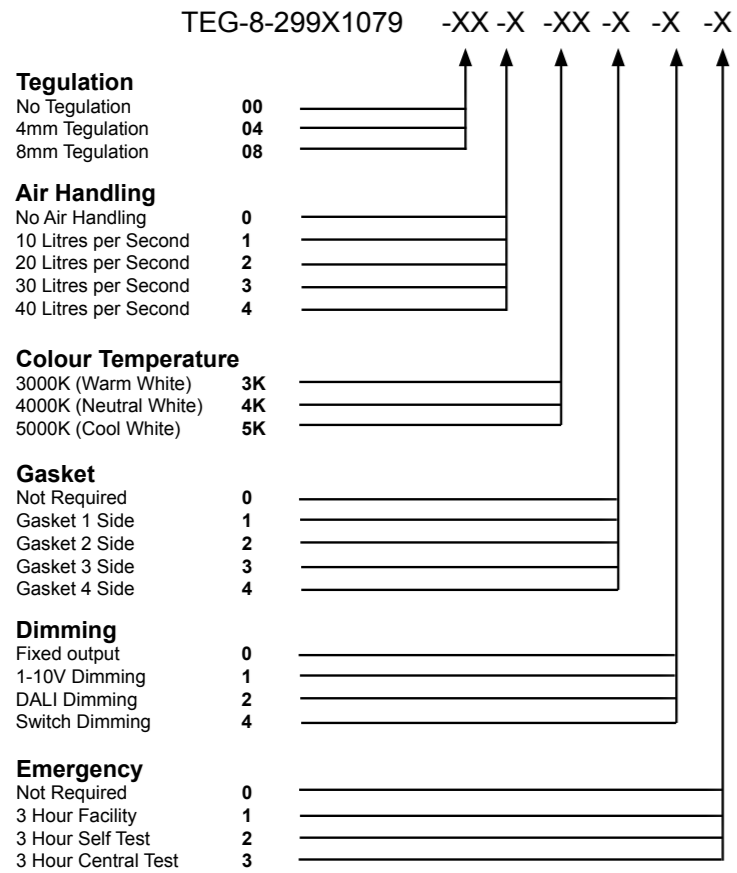
TEGRA 299X1079

- Architectural appearance - screwless smooth bezel
- High transmittant satin opal lens Instant on - no flicker
- Environmentally Friendly - No mercury or lead enters the environment
- SAS330 Compliant
- No RF and electronic magnetic interference
- Over 50,000 hours life span



The Tegra LED panel is a bespoke modular luminaire designed to fit SAS330 ceilings. The body is made from powder coated steel giving a screwless appearance from under the ceiling. The diffuser is made from high efficiency PMMA which gives the luminaire optimum performance.

The Tegra has a lifespan of over 50,000 hours and produces an efficacy of 110.5 lm/W.



Example of Code:

TEG-8-299X1079-00-0-3K-1-0-0

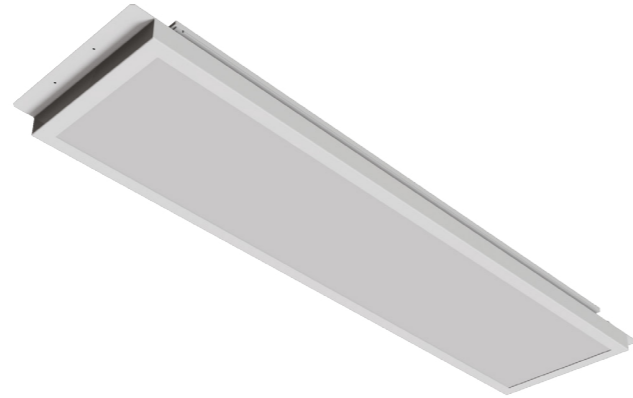
Tegulation: No Tegulation
 Air Handling: No Air Handling
 Colour Temp.: 3000K
 Gasket: Gasket 1 side
 Dimming: Fixed output
 Emergency: Not Required

Tegra 299x1079	
Power	36 W
Dimensions	299 x 1079 x 75mm
Weight	6.5 kg
Installation	SAS330 Ceiling
Voltage	220-240Vac 50/60Hz

Performance	
Exit Lumens (lm)	4,001 lm
Efficiency	110.5 ll/cW
MacAdam Ellipse	3 SDCM
Colour Rendering	Ra>80
Colour Temperature	3000K / 4000K / 5000K
UGR	<19
Longevity	50,000 hours
Warranty	5 Years

TEGRA 299X1199

- Architectural appearance - screwless smooth bezel
- High transmittant satin opal lens Instant on - no flicker
- Environmentally Friendly - No mercury or lead enters the environment
- SAS330 Compliant
- No RF and electronic magnetic interference
- Over 50,000 hours life span



The Tegra LED panel is a bespoke modular luminaire designed to fit SAS330 ceilings. The body is made from powder coated steel giving a screwless appearance from under the ceiling. The diffuser is made from high efficiency PMMA which gives the luminaire optimum performance.

The Tegra has a lifespan of over 50,000 hours and produces an efficacy of 113.6 lm/W.

Tegra 299x1199	
Power	36 W
Dimensions	299 x 1199 x 75mm
Weight	7.5 kg
Installation	SAS330 Ceiling
Voltage	220-240Vac 50/60Hz

TEG-8-299X1199		-XX	-X	-XX	-X	-X	-X
Tegulation		↑	↑	↑	↑	↑	↑
No Tegulation	00						
4mm Tegulation	04						
8mm Tegulation	08						
Air Handling							
No Air Handling	0						
10 Litres per Second	1						
20 Litres per Second	2						
30 Litres per Second	3						
40 Litres per Second	4						
Colour Temperature							
3000K (Warm White)	3K						
4000K (Neutral White)	4K						
5000K (Cool White)	5K						
Gasket							
Not Required	0						
Gasket 1 Side	1						
Gasket 2 Side	2						
Gasket 3 Side	3						
Gasket 4 Side	4						
Dimming							
Fixed output	0						
1-10V Dimming	1						
DALI Dimming	2						
Switch Dimming	4						
Emergency							
Not Required	0						
3 Hour Facility	1						
3 Hour Self Test	2						
3 Hour Central Test	3						

Example of Code:

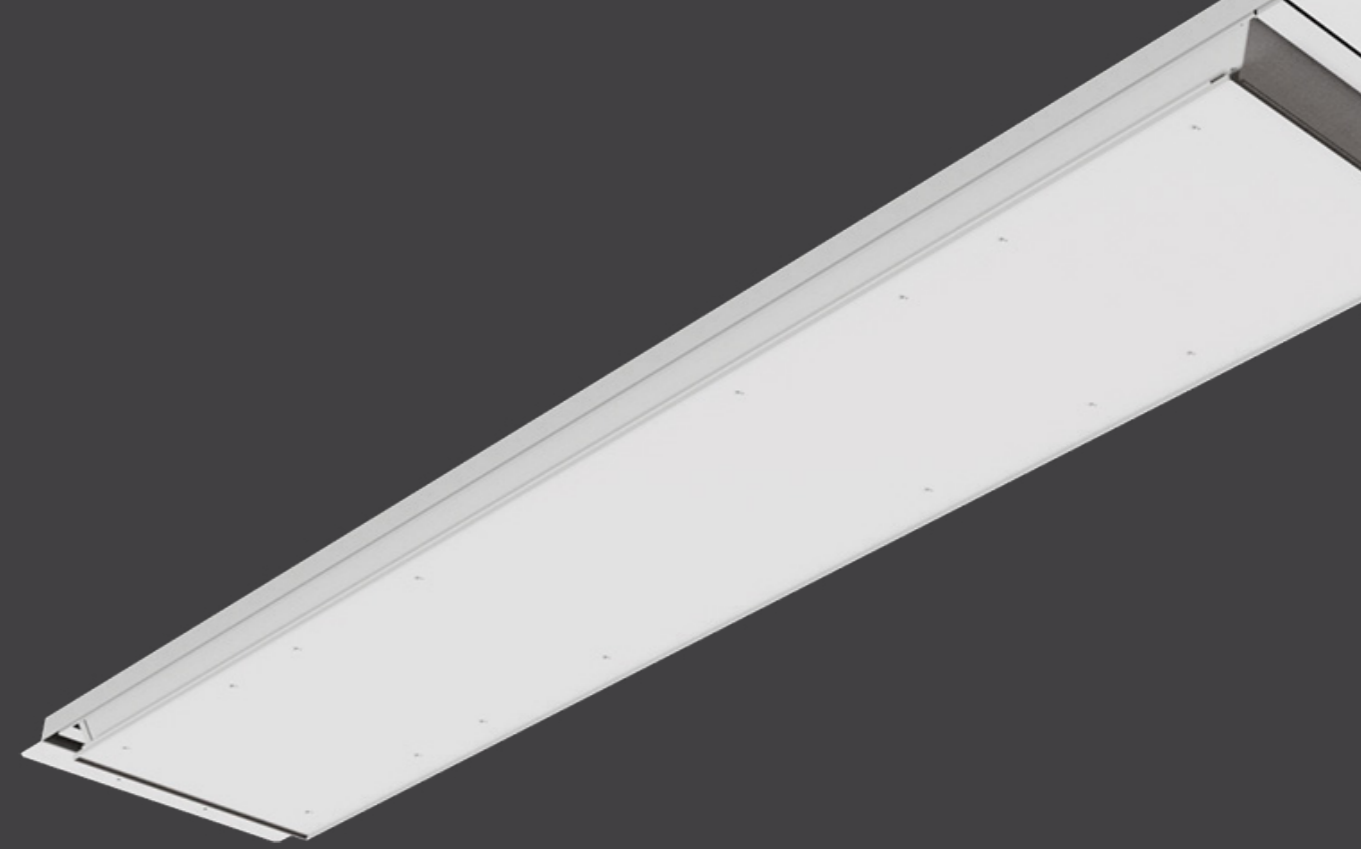
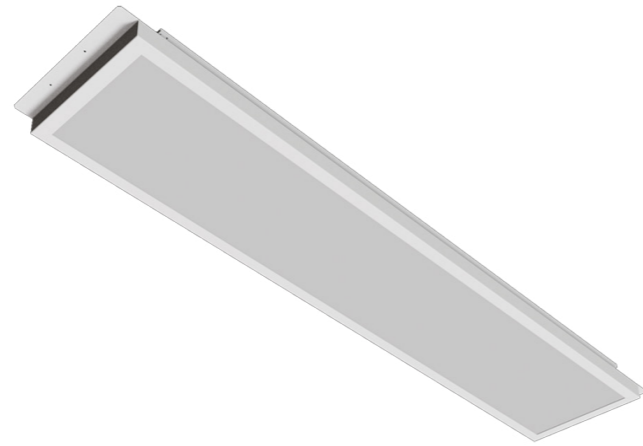
TEG-8-299X1199-00-0-3K-1-0-0

Tegulation: No Tegulation
 Air Handling: No Air Handling
 Colour Temp.: 3000K
 Gasket: Gasket 1 side
 Dimming: Fixed output
 Emergency: Not Required

Performance	
Exit Lumens (lm)	4,112 lm
Efficiency	113.6 lm/W
MacAdam Ellipse	3 SDCM
Colour Rendering	Ra>80
Colour Temperature	3000K / 4000K / 5000K
UGR	<19
Longevity	50,000 hours
Warranty	5 Years

TEGRA 299X1499

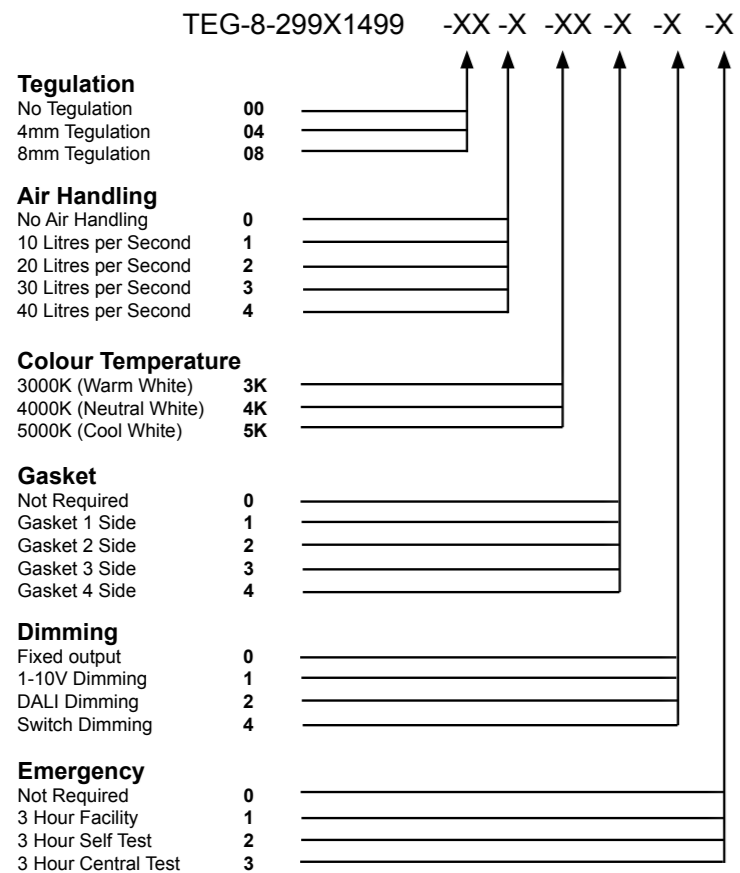
- Architectural appearance - screwless smooth bezel
- High transmittant satin opal lens Instant on - no flicker
- Environmentally Friendly - No mercury or lead enters the environment
- SAS330 Compliant
- No RF and electronic magnetic interference
- Over 50,000 hours life span



The Tegra LED panel is a bespoke modular luminaire designed to fit SAS330 ceilings. The body is made from powder coated steel giving a screwless appearance from under the ceiling. The diffuser is made from high efficiency PMMA which gives the luminaire optimum performance.

The Tegra has a lifespan of over 50,000 hours and produces an efficacy of 113.6 lm/W.

Tegra 299x1499	
Power	45 W
Dimensions	299 x1499 x 75mm
Weight	9.3 kg
Installation	SAS330 Ceiling
Voltage	220-240Vac 50/60Hz



Example of Code:

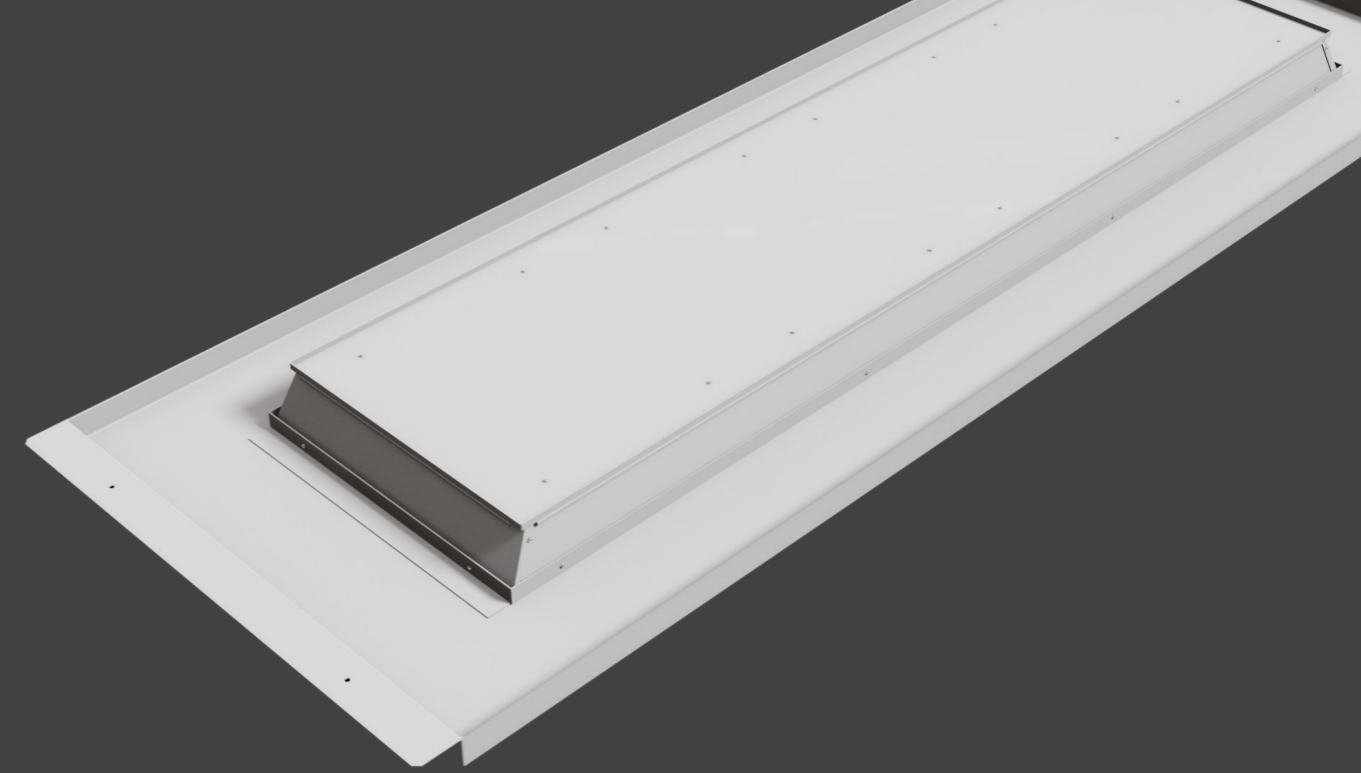
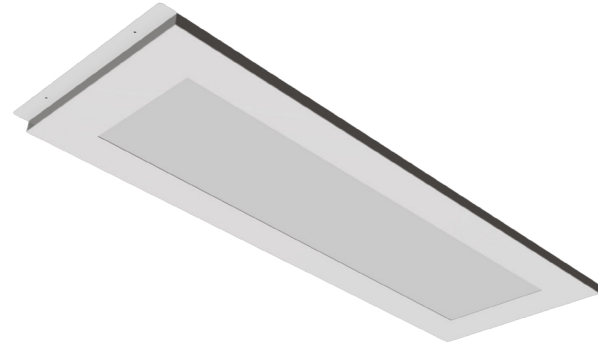
TEG-8-299X1499-00-0-3K-1-0-0

Tegulation: No Tegulation
 Air Handling: No Air Handling
 Colour Temp.: 3000K
 Gasket: Gasket 1 side
 Dimming: Fixed output
 Emergency: Not Required

Performance	
Exit Lumens (lm)	5,130 lm
Efficiency	113.6 lm/cW
MacAdam Ellipse	3 SDCM
Colour Rendering	Ra>80
Colour Temperature	3000K / 4000K / 5000K
UGR	<19
Longevity	50,000 hours
Warranty	5 Years

TEGRA 499X1399

- Architectural appearance - screwless smooth bezel
- High transmittant satin opal lens Instant on - no flicker
- Environmentally Friendly - No mercury or lead enters the environment
- No RF and electronic magnetic interference
- Over 50,000 hours life span



The Tegra LED panel is a bespoke modular luminaire designed to fit SAS330 ceilings. The body is made from powder coated steel giving a screwless appearance from under the ceiling. The diffuser is made from high efficiency PMMA which gives the luminaire optimum performance

Tegra 499X1399	
Power	36 W
Dimensions	499 x 1399 x 75mm
Weight	7.5 kg
Installation	SAS330 Ceiling
Voltage	220-240Vac 50/60Hz

TEG-8-499X1399		-XX	-X	-XX	-X	-X	-X
Tegulation		↑	↑	↑	↑	↑	↑
No Tegulation	00						
4mm Tegulation	04						
8mm Tegulation	08						
Air Handling		↑	↑	↑	↑	↑	↑
No Air Handling	0						
10 Litres per Second	1						
20 Litres per Second	2						
30 Litres per Second	3						
40 Litres per Second	4						
Colour Temperature		↑	↑	↑	↑	↑	↑
3000K (Warm White)	3K						
4000K (Neutral White)	4K						
5000K (Cool White)	5K						
Gasket		↑	↑	↑	↑	↑	↑
Not Required	0						
Gasket 1 Side	1						
Gasket 2 Side	2						
Gasket 3 Side	3						
Gasket 4 Side	4						
Dimming		↑	↑	↑	↑	↑	↑
Fixed output	0						
1-10V Dimming	1						
DALI Dimming	2						
Switch Dimming	4						
Emergency		↑	↑	↑	↑	↑	↑
Not Required	0						
3 Hour Facility	1						
3 Hour Self Test	2						
3 Hour Central Test	3						

Example of Code:

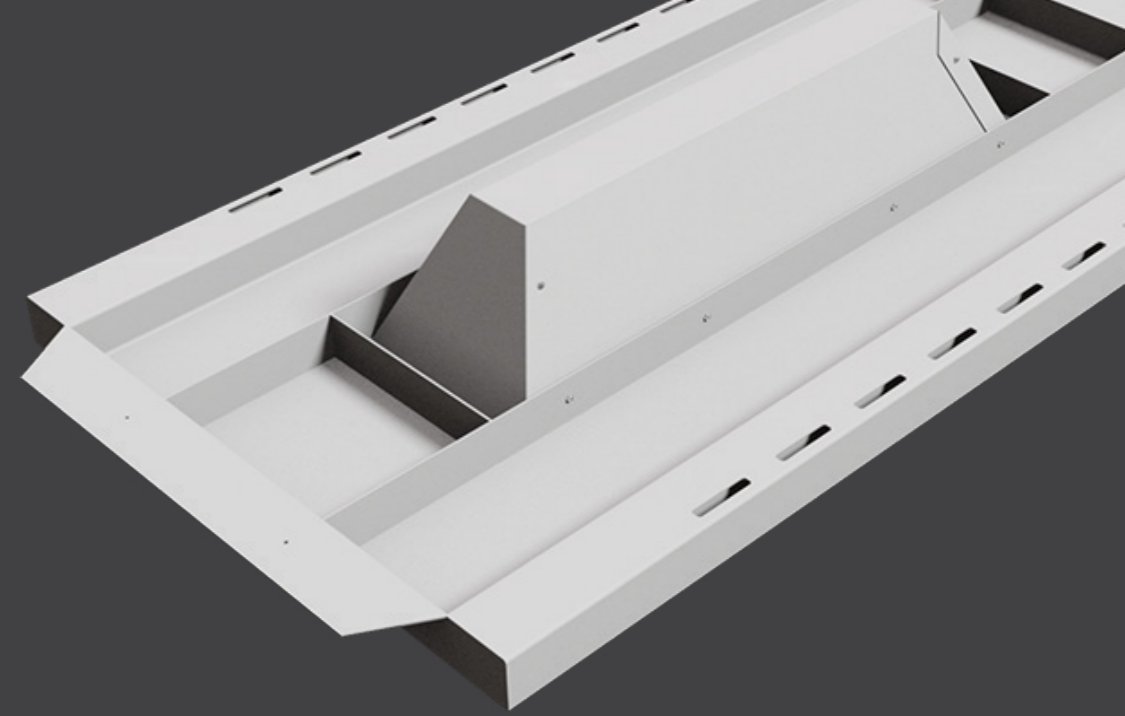
TEG-8-499X1399-00-0-3K-1-0-0

Tegulation: No Tegulation
 Air Handling: No Air Handling
 Colour Temp.: 3000K
 Gasket: Gasket 1 side
 Dimming: Fixed output
 Emergency: Not Required

Performance	
Exit Lumens (lm)	4,112 lm
Efficiency	113.6 ll/cW
MacAdam Ellipse	3 SDCM
Colour Rendering	Ra>80
Colour Temperature	3000K / 4000K / 5000K
UGR	<19
Longevity	50,000 hours
Warranty	5 Years

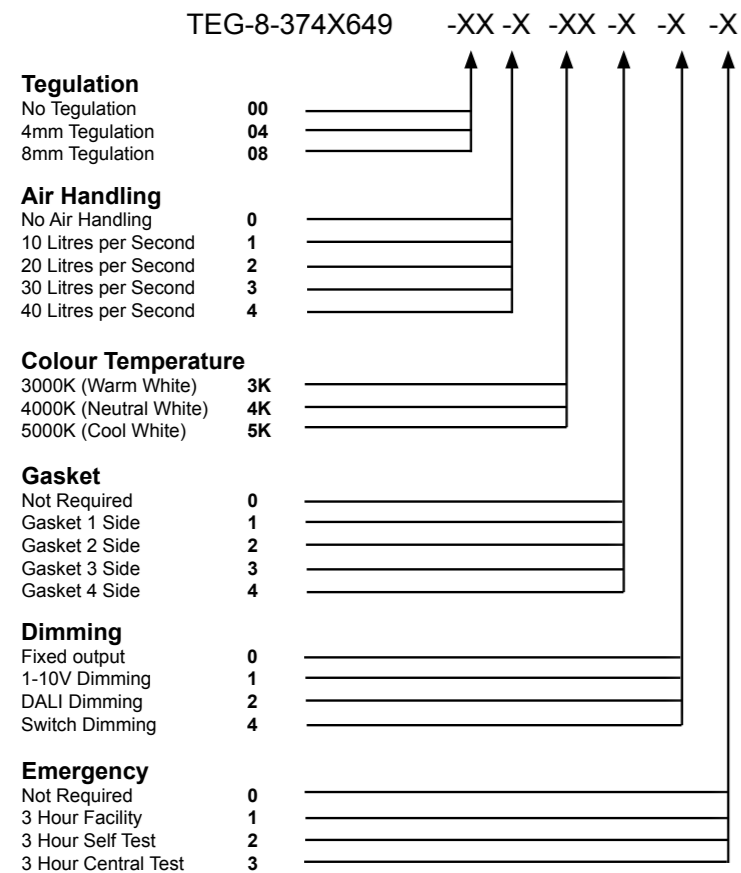
TEGRA 374X649

- Architectural appearance - screwless smooth bezel
- High transmittant satin opal lens Instant on - no flicker
- Environmentally Friendly - No mercury or lead enters the environment
- No RF and electronic magnetic interference
- Over 50,000 hours life span



The Tegra LED panel is a bespoke modular luminaire designed to fit SAS330 ceilings. The body is made from powder coated steel giving a screwless appearance from under the ceiling. The diffuser is made from high efficiency PMMA which gives the luminaire optimum performance.

The Tegra has a lifespan of over 50,000 hours and produces an efficacy of 119 lm/W.



Example of Code:

TEG-8-374X649-00-0-3K-1-0-0

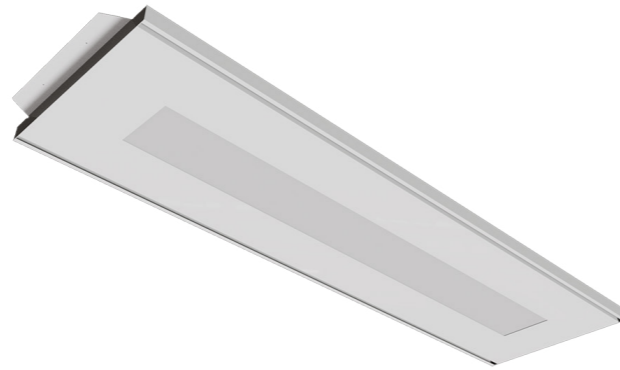
Tegulation: No Tegulation
 Air Handling: No Air Handling
 Colour Temp.: 3000K
 Gasket: Gasket 1 side
 Dimming: Fixed output
 Emergency: Not Required

Tegra 374X649	
Power	14 W
Dimensions	374 x 649 x 95mm
Weight	4.0 kg
Installation	SAS330 Ceiling
Voltage	220-240Vac 50/60Hz

Performance	
Exit Lumens (lm)	1,742 lm
Efficiency	119.3 ll/cW
MacAdam Ellipse	3 SDCM
Colour Rendering	Ra>80
Colour Temperature	3000K / 4000K / 5000K
UGR	<19
Longevity	50,000 hours
Warranty	5 Years

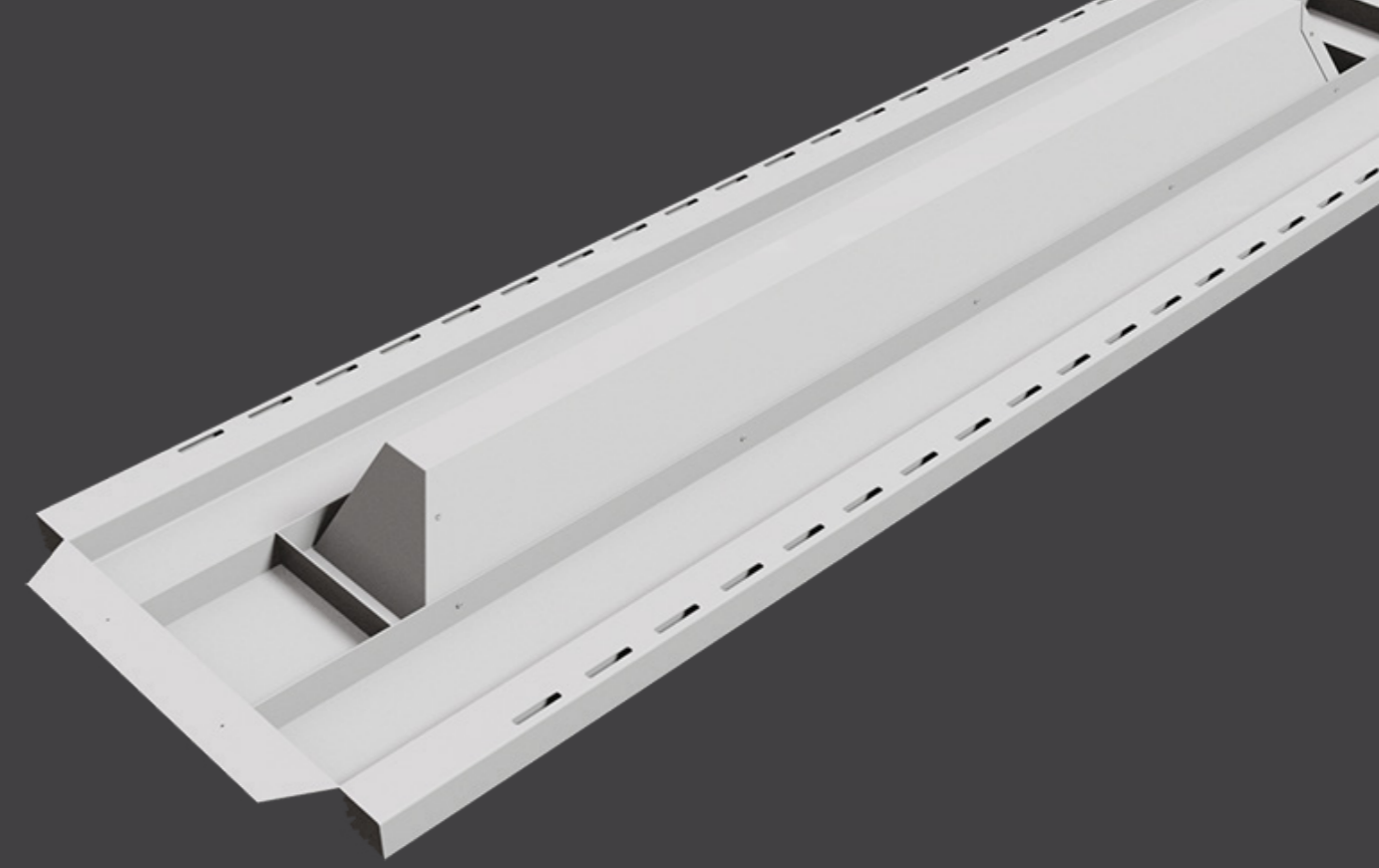
TEGRA 374X1299

- Architectural appearance - screwless smooth bezel
- High transmittant satin opal lens Instant on - no flicker
- Environmentally Friendly - No mercury or lead enters the environment
- No RF and electronic magnetic interference
- Over 50,000 hours life span

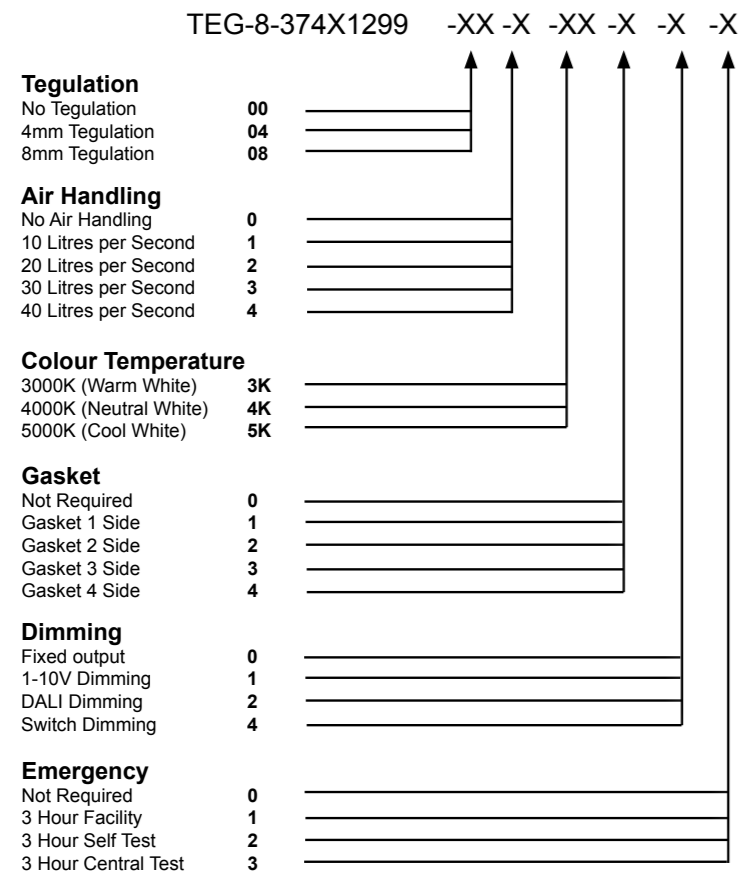


The Tegra LED panel is a bespoke modular luminaire designed to fit SAS330 ceilings. The body is made from powder coated steel giving a screwless appearance from under the ceiling. The diffuser is made from high efficiency PMMA which gives the luminaire optimum performance.

The Tegra has a lifespan of over 50,000 hours and produces an efficacy of 119 lm/W.



Tegra 374x1299	
Power	30 W
Dimensions	374 x 1299 x 95mm
Weight	6.0 kg
Installation	SAS330 Ceiling
Voltage	220-240Vac 50/60Hz



Example of Code:

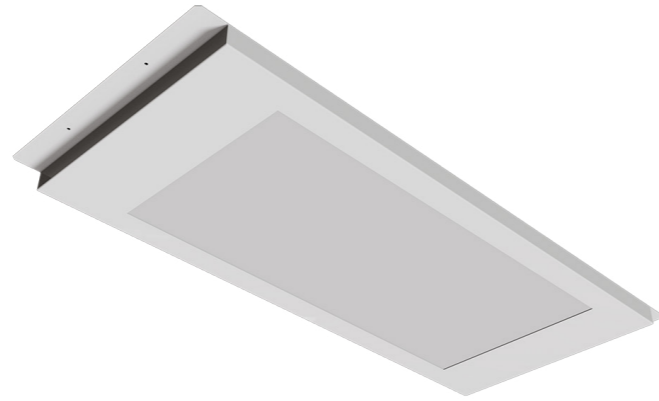
TEG-8-374X1299-00-0-3K-1-0-0

Tegulation: No Tegulation
 Air Handling: No Air Handling
 Colour Temp.: 3000K
 Gasket: Gasket 1 side
 Dimming: Fixed output
 Emergency: Not Required

Performance	
Exit Lumens (lm)	3,520 lm
Efficiency	119.3 ll/cW
MacAdam Ellipse	3 SDCM
Colour Rendering	Ra>80
Colour Temperature	3000K / 4000K / 5000K
UGR	<19
Longevity	50,000 hours
Warranty	5 Years

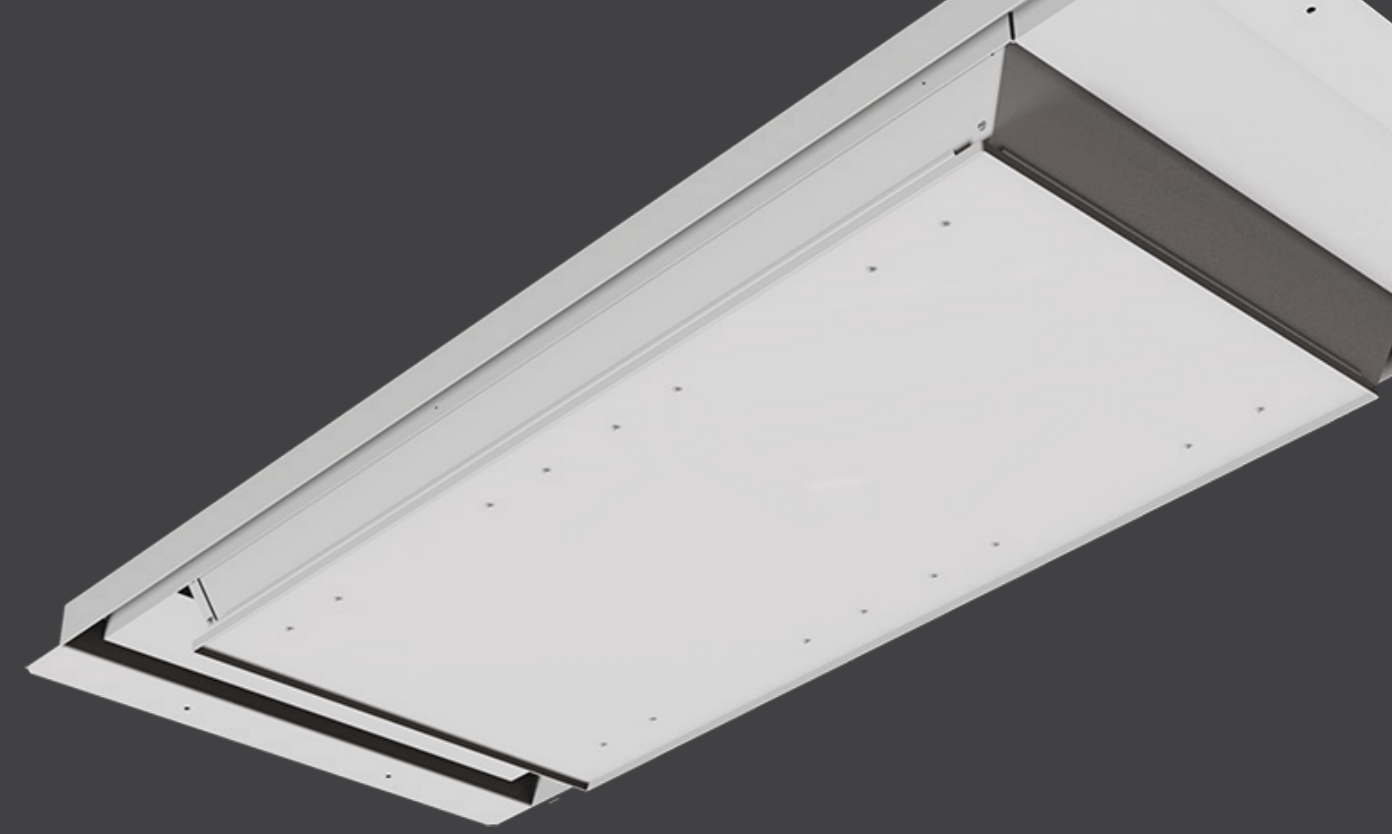
TEGRA 349X799

- Architectural appearance - screwless smooth bezel
- High transmittant satin opal lens Instant on - no flicker
- Environmentally Friendly - No mercury or lead enters the environment
- No RF and electronic magnetic interference
- Over 50,000 hours life span



The Tegra LED panel is a bespoke modular luminaire designed to fit SAS330 ceilings. The body is made from powder coated steel giving a screwless appearance from under the ceiling. The diffuser is made from high efficiency PMMA which gives the luminaire optimum performance.

The Tegra has a lifespan of over 50,000 hours and produces an efficacy of 119 lm/W.



Tegra 349x799	
Power	15 W
Dimensions	349 x 799 x 95mm
Weight	3.3 kg
Installation	SAS330 Ceiling
Voltage	220-240Vac 50/60Hz

TEG-8-349X799		-XX	-X	-XX	-X	-X	-X
Tegulation		↑	↑	↑	↑	↑	↑
No Tegulation	00						
4mm Tegulation	04						
8mm Tegulation	08						
Air Handling							
No Air Handling	0						
10 Litres per Second	1						
20 Litres per Second	2						
30 Litres per Second	3						
40 Litres per Second	4						
Colour Temperature							
3000K (Warm White)	3K						
4000K (Neutral White)	4K						
5000K (Cool White)	5K						
Gasket							
Not Required	0						
Gasket 1 Side	1						
Gasket 2 Side	2						
Gasket 3 Side	3						
Gasket 4 Side	4						
Dimming							
Fixed output	0						
1-10V Dimming	1						
DALI Dimming	2						
Switch Dimming	4						
Emergency							
Not Required	0						
3 Hour Facility	1						
3 Hour Self Test	2						
3 Hour Central Test	3						

Example of Code:

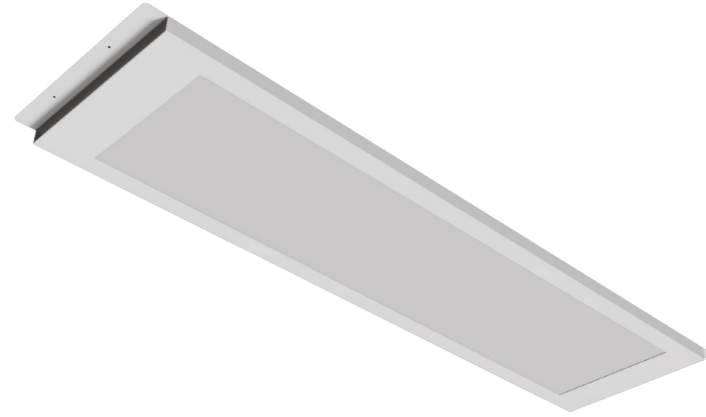
TEG-8-349X799-00-0-3K-1-0-0

Tegulation: No Tegulation
 Air Handling: No Air Handling
 Colour Temp.: 3000K
 Gasket: Gasket 1 side
 Dimming: Fixed output
 Emergency: Not Required

Performance	
Exit Lumens (lm)	1,778 lm
Efficiency	119.3 lm/cW
MacAdam Ellipse	3 SDCM
Colour Rendering	Ra>80
Colour Temperature	3000K / 4000K / 5000K
UGR	<19
Longevity	50,000 hours
Warranty	5 Years

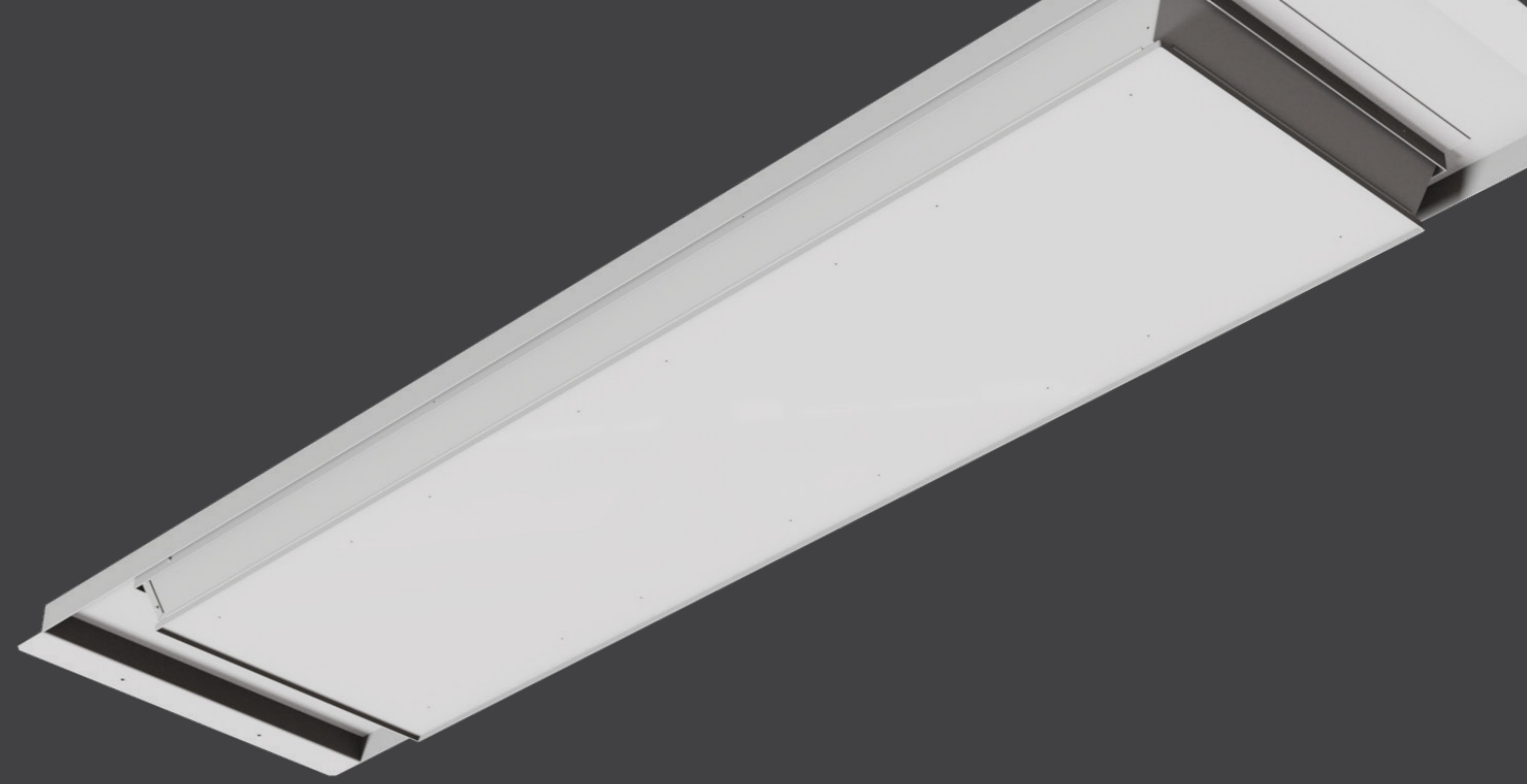
TEGRA 349X1349

- Architectural appearance - screwless smooth bezel
- High transmittant satin opal lens Instant on - no flicker
- Environmentally Friendly - No mercury or lead enters the environment
- No RF and electronic magnetic interference
- Over 50,000 hours life span

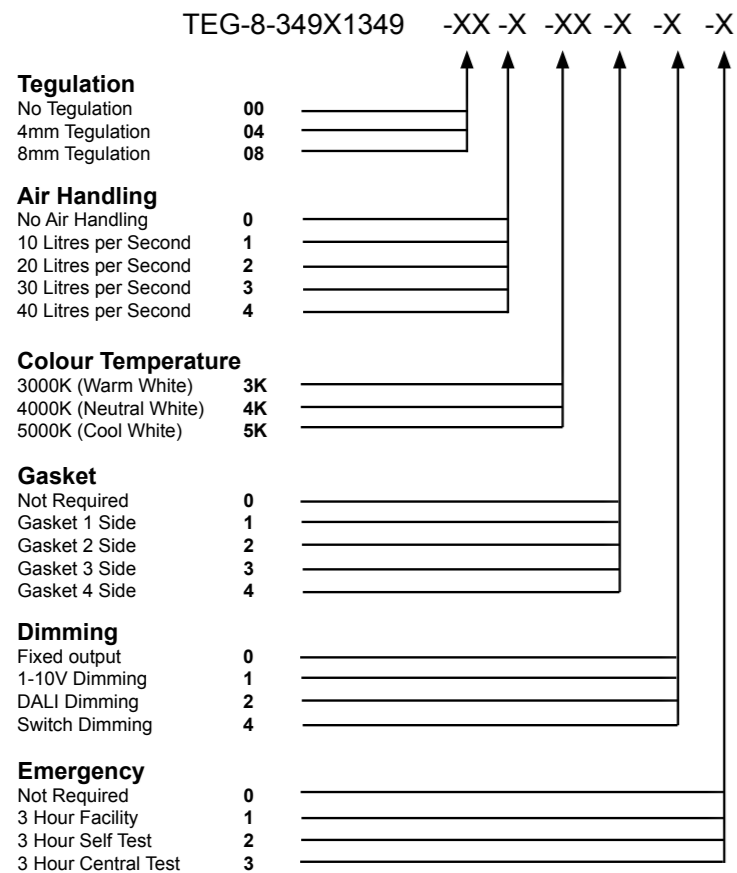


The Tegra LED panel is a bespoke modular luminaire designed to fit SAS330 ceilings. The body is made from powder coated steel giving a screwless appearance from under the ceiling. The diffuser is made from high efficiency PMMA which gives the luminaire optimum performance.

The Tegra has a lifespan of over 50,000 hours and produces an efficacy of 119 lm/W.



Tegra 349x1349	
Power	30 W
Dimensions	349 x 1349 x 95mm
Weight	6.5 kg
Installation	SAS330 Ceiling
Voltage	220-240Vac 50/60Hz



Example of Code:

TEG-8-349X1349-00-0-3K-1-0-0

Tegulation: No Tegulation
 Air Handling: No Air Handling
 Colour Temp.: 3000K
 Gasket: Gasket 1 side
 Dimming: Fixed output
 Emergency: Not Required

Performance	
UGR	<19
Exit Lumens (lm)	3,520 lm
Efficiency	119.3 lm/cW
MacAdam Ellipse	3 SDCM
Colour Rendering	Ra>80
Colour Temperature	3000K / 4000K / 5000K
UGR	<19
Longevity	50,000 hours
Warranty	5 Years

sales@led.uk
www.led.uk

LED UK